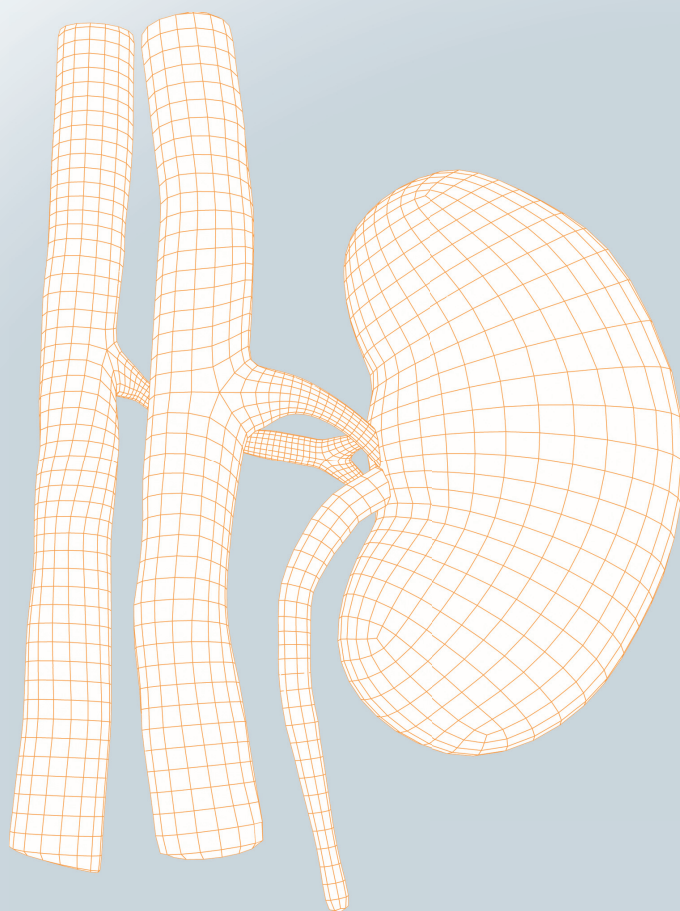


# Hypertension

---

## Direct Renin

Superior performance for the accurate diagnosis of hypertension



**DiaSorin**

The Diagnostic Specialist

# Hypertension

## LIAISON® Direct Renin

The LIAISON® Direct Renin assay uses chemiluminescent immunoassay (CLIA) technology for the in vitro quantitative determination of renin in human EDTA-plasma specimens. Renin measurement is of help in the diagnosis and treatment of a number of hypertension types in humans.

### ■ PRECISE

- Inter-assay CV% < 12.8%
- Intra-assay CV% < 3.7%

### ■ FLEXIBLE

- Wide measuring range: up to 500  $\mu$ IU/mL
- Functional sensitivity: < 1.96  $\mu$ IU/mL
- Analytical sensitivity: < 0.53  $\mu$ IU/mL
- Hook effect: > 150000  $\mu$ IU/mL
- Stability of the calibration curve: 7 days
- Storage of samples: rapidly deep frozen or at RT

### ■ RELIABLE

- Referred to: WHO IRP 68/356

### ■ FAST

- Incubation time: 30' (one step assay)
- Time to first result: 35'
- Throughput: 180 test/h

## Renin

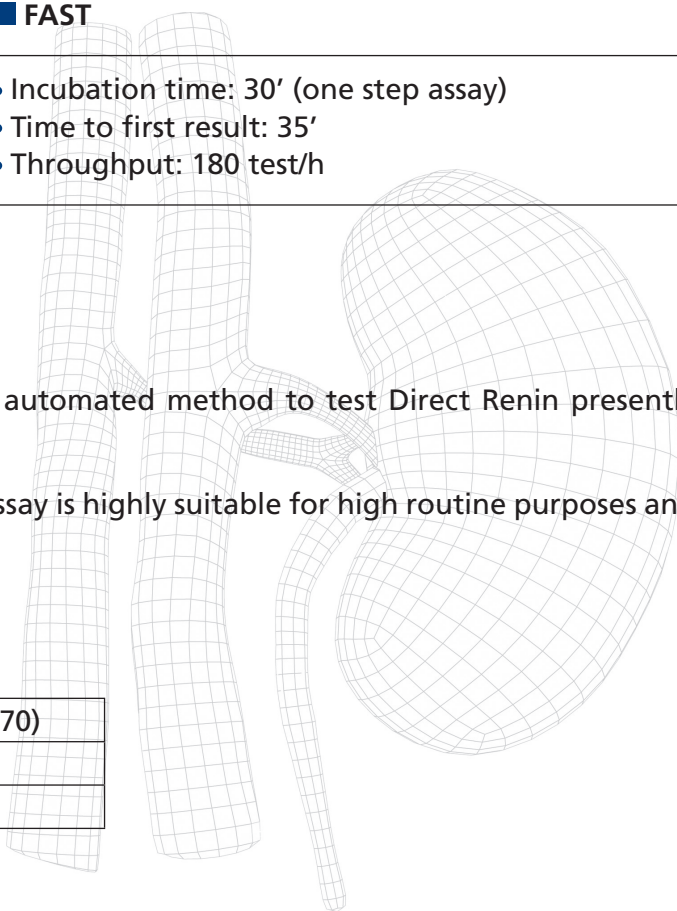
The LIAISON® Direct Renin assay is the UNIQUE fully automated method to test Direct Renin presently available on a closed analytical system.

It is FAST and PRACTICAL: the LIAISON® Direct Renin assay is highly suitable for high routine purposes and the analytical procedure is really practical.

LIAISON® Direct Renin 100 determinations (code 310470)

LIAISON® Direct Renin Control set (code 310471)

LIAISON® Endocrinology Diluent (code 319133)



M0870004217 12264 0110



The Diagnostic Specialist

Diasorin S.p.A.  
Via Crescentino  
13040 Saluggia (VC) - Italy  
Tel. +39.0161.487526  
Fax: +39.0161.487670  
www.diasorin.com  
E-mail: info@diasorin.it

